



TOTAL SCRUB LOVE...

Affordable, stylish comfort with 4-way Spandex-Stretch.

Best for:



4-Way Stretch



Sustainable Fabric
7 Recycled Bottles
Per Garment



Soil Release



Moisture-Wicking

Primary Fabric Content:
54% Polyester/40 Recycled Polyester/6% Spandex

Color shown: 1659 New Turquoise

SK101 Vitality Top

3-pocket virtual V-neck, shaped hem,
detailed cover stitching, contrast back
neck binding

Modern Fit

Sizes: XXS - 5XL, CB: 25.5"

Color shown: 39 Teal



Fabric Content:

54% Polyester

40% Recycled Polyester

6% Spandex



Sustainable Fabric
7 Recycled Bottles
Per Garment

See page 94 for all details



SKK002 True Tee **NEW**

Crew neck long sleeve
Modern Fit
Sizes: XS/S, M, L/XL, XXL
CB: 28"
Color shown: 18 Pewter



NEW COLORS

01 Black • NEW

18 Pewter • NEW

See page 97 for all details

COMFORT STRETCH

Fabric Content:
95% Cotton
5% Spandex

SKK001 True Tee

Crew neck raglan long sleeve
Modern Fit
Sizes: XS/S, M, L/XL, XXL
CB: 26"
Color shown: 41 Navy



NEW COLORS

18 Pewter • NEW

41 Navy • NEW

See page 95, 97 for all details

NEW PRINTS



SKT021- BFRN Best Friends **NEW**

3-pocket, virtual V-neck, shaped hem,
detailed cover stitching
Modern Fit

Sizes: XS - 5XL, CB: 25.5"

SK201 Reliance Pant - 08 New Royal

Coordinating colors:

01 08 10 18 67 230 328

COMFORT STRETCH

Fabric Content:

54% Polyester / 40% Recycled Polyester

6% Spandex



Sustainable Fabric
7 Recycled Bottles
Per Garment



When you purchase BOBS, a donation
will be made to the Petco Foundation to
help save the lives of dogs and cats.



If you've ever shared your life with a pet, you
know that love changes everything. Love is
why the Petco Foundation helps create a
better world for pets. When you purchase
this product, a donation will be made to help
save the lives of dogs and cats.





SKT021-FCDP Cats & Dogs NEW

3-pocket, virtual V-neck, shaped hem,
detailed cover stitching
Modern Fit

Sizes: XS - 5XL, CB: 25.5"

SK202 Vitality Pant - 67 Cherry Pie

Coordinating colors:

01 10 18 67

COMFORT STRETCH

Fabric Content:

54% Polyester / 40% Recycled Polyester
6% Spandex



Sustainable Fabric
7 Recycled Bottles
Per Garment



When you purchase BOBS, a donation
will be made to the Petco Foundation to
help save the lives of dogs and cats.

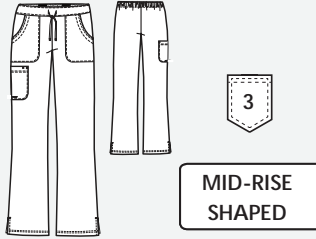


If you've ever shared your life with a pet, you
know that love changes everything. Love is
why the Petco Foundation helps create a
better world for pets. When you purchase
this product, a donation will be made to help
save the lives of dogs and cats.

Fabric Content:
54% Polyester
40% Recycled Polyester
6% Spandex

SK201 Reliance Pant

3-pocket, flat front with tape tie, branded, inside logo plush elastic waistband, cargo pocket
Modern Fit
Sizes: XXS - 5XL, I: 31.5"
XXSP - 2XLP, I: 29.5"
XXST - XLT, I: 33.5"
Color shown: 39 Teal



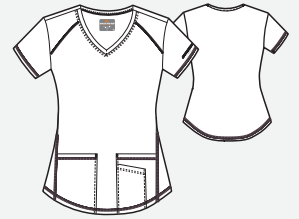
SK202 Vitality Pant

3-pocket, plush logo plush elastic waistband, cargo pocket
Modern Fit
Sizes: XXS - 5XL, I: 31.5"
XXSP - 2XLP, I: 29.5"
XXST - XLT, I: 33.5"
Color shown: 503 Galaxy



SK101 Vitality Top

3-pocket, virtual V-neck, shaped hem, detailed cover stitching, contrast back neck binding
Modern Fit
Sizes: XXS - 5XL, CB: 25.5"
Color shown: 328 Bahama



| | | | |
|--------------------|--|--|--|
| 01 Black | | | |
| 08 New Royal | | | |
| 10 White | | | |
| 18 Pewter | | | |
| 37 Hunter | | | |
| 39 Teal | | | |
| 40 Ciel | | | |
| 41 Navy | | | |
| 65 Wine | | | |
| 67 Cherry Pie | | | |
| 78 French Roast | | | |
| 230 Khaki | | | |
| 328 Bahama | | | |
| 503 Galaxy | | | |
| 1276 New Grape | | | |
| 1277 Eggplant | | | |
| 1659 New Turquoise | | | |

Core
Colors



Sustainable Fabric
7 Recycled Bottles
Per Garment



3-pocket, V-neck surplice with front princess seams, side vent detail, contrast back neck binding
Modern Fit
Sizes: XXS - 5XL, CB: 25.5"
Color shown: 1659 New Turquoise



2-pocket, round neck, snap front closure,
dye to match seamless knit sock cuff
sleeves, contrast back neck binding
Modern Fit
Sizes: XS - 5XL, CB: 27"
Color shown: 65 Wine

Technical line drawing of a long-sleeved shirt. The front view shows a button placket with five buttons, two chest pockets with buttoned flaps, and a curved hem. The back view shows a plain back with a curved hem. The drawing includes dashed lines for construction and a small label '100% COTTON' on the inside of the collar.

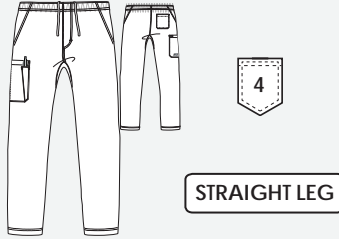
Crew neck raglan long sleeve
Modern Fit
Sizes: XS/S, M, L/XL, XXL
CB: 26"
Color shown: 18 Pewter

[illegible]

Fabric Content:
54% Polyester
40% Recycled Polyester
6% Spandex

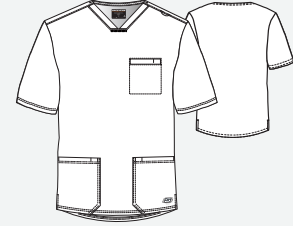
SK0215 Structure Pant

4-pocket, full elastic waistband draw-cord,
inseam gusset, cargo pocket
Sizes: XS - 5XL, I: 32"
XSS - XLS, I: 30"
ST - XLT, I: 34"
Color shown: 40 Ciel



SKT020 Aspire Top

3-pocket, sports V-neck
with media loop
Sizes: XS - 5XL, CB: 30"
Color shown: 1659 New Turquoise



| | | |
|--------------------|--|--|
| 01 Black | | |
| 08 New Royal | | |
| 10 White | | |
| 18 Pewter | | |
| 37 Hunter | | |
| 39 Teal | | |
| 40 Ciel | | |
| 41 Navy | | |
| 65 Wine | | |
| 78 French Roast | | |
| 230 Khaki | | |
| 328 Bahama | | |
| 503 Galaxy | | |
| 1276 New Grape | | |
| 1277 Eggplant | | |
| 1659 New Turquoise | | |

Core
Colors



Sustainable Fabric
7 Recycled Bottles
Per Garment

