

GREY'S ANATOMY™

© ABC Studios

PROFESSIONAL WEAR
BY BARCO

EDGE



INNOVATION

Nik Whyte

Profession: Family Doctor

Instagram Handle: @doctor.fitnik

The word innovation takes on a unique meaning in the healthcare field. It can mean finding innovative ways to care for your patients beyond medicine or maybe using innovation through technology to research, treat and cure patients with health issues. There has been quite a lot of press around the topic of AI (Artificial Intelligence) and ML (Machine Learning) in the medical field, but one thing will never change no matter how advanced medical research technology becomes; the passion, caring and sense of purpose that comes from within healthcare professionals hearts will never fade over time.

GREY'S ANATOMY™

© ABC Studios

PROFESSIONAL WEAR
BY BARCO

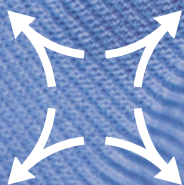
EDGE

GREY'S ANATOMY™
EDGE

EXUDE EFFORTLESS CONFIDENCE...

Grey's Anatomy™ EDGE is curated from the *Super Fabric* Nylex™ that delivers beyond all others...just like you.

Best for:



Durable Knit



Breathable



Wrinkle Recovery



Soil Release

Primary Fabric Content:
76% Nylon/24% Spandex

Color shown: 40 Ciel

GET013 Axis Top

2-pocket, V-neck, Kanga pockets, center back yoke
 Modern Fit
 Sizes: XXS - 3XL, CB: 25.5"
 Color shown: 40 Ciel



Fabric Content:
 76% Nylon/24% Spandex

NEW COLOR

40 Ciel

• NEW

ADDITIONAL COLORS

01 Black

08 New Royal

23 Indigo

65 Wine

1406 Stormy Sky

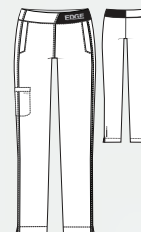
1423 Aloe

See page 16-17 for all details



GEP004 Axis Pant

3-pocket, logo plush elastic waist, mid-rise
 Modern Fit
 Sizes: XXS - 3XL, I: 31.5"
 XXSP - XLP, I: 29.5"
 XST - XLT, I: 33.5"
 Color shown: 40 Ciel



GET006 Lyra Top

3-pocket, knit polo collar with welt chest and side entry pockets

Modern Fit

Sizes: XXS - 3XL, CB: 26"

Color shown: 65 Wine



Fabric Content:

76% Nylon / 24% Spandex

Knit Collar:

96% Polyester

4% Spandex

NEW COLOR

40 Ciel

• NEW

ADDITIONAL COLORS

01 Black

08 New Royal

23 Indigo

65 Wine

1406 Stormy Sky

1423 Aloe

See page 16-17 for all details

GEP005 Lyra Pant

3-pocket, logo plush elastic waist mid-rise, seamed slim leg

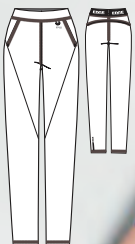
Modern Fit

Sizes: XXS - 3XL, I: 31.5"

XXSP - XLP, I: 29.5"

XST - XLT, I: 33.5"

Color shown: 65 Wine

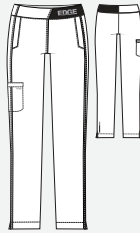


Fabric Content:
 76% Nylon
 24% Spandex

- Durable Knit
- Breathable
- Soil Release
- Wrinkle Recovery

GEP004 Axis Pant

3-pocket, logo plush elastic waist, mid-rise
 Modern Fit
 Sizes: XXS - 3XL, I: 31.5"
 XXSP - XLP, I: 29.5"
 XST - XLT, I: 33.5"
 Color shown: 65 Wine



MID-RISE
 STRAIGHT LEG

GEP005 Lyra Pant

3-pocket, logo plush elastic waist, mid-rise seamed slim leg
 Modern Fit
 Sizes: XXS - 3XL, I: 31.5"
 XXSP - XLP, I: 29.5"
 XST - XLT, I: 33.5"
 Color shown: 1406 Stormy Sky



MID-RISE
 TAPERED LEG

GET013 Axis Top

2-pocket, V-neck, Kanga pockets, center back yoke
 Modern Fit
 Sizes: XXS - 3XL, CB: 25.5"
 Color shown: 08 New Royal



01 Black			
08 New Royal			
23 Indigo			
40 Ciel • NEW			
65 Wine			
1406 Stormy Sky			
1423 Aloe			

Core
 Colors



GET006 Lyra Top

3-pocket, knit polo collar with welt chest and side entry pockets
Modern Fit
Sizes: XXS - 3XL, CB: 26"
Color shown: 40 Ciel



GEJ004 Luna Jacket

2-pocket, mock neck with contour seamed zip front
Sizes: XXS - 3XL, CB: 25.5"
Color shown: 1423 Aloe

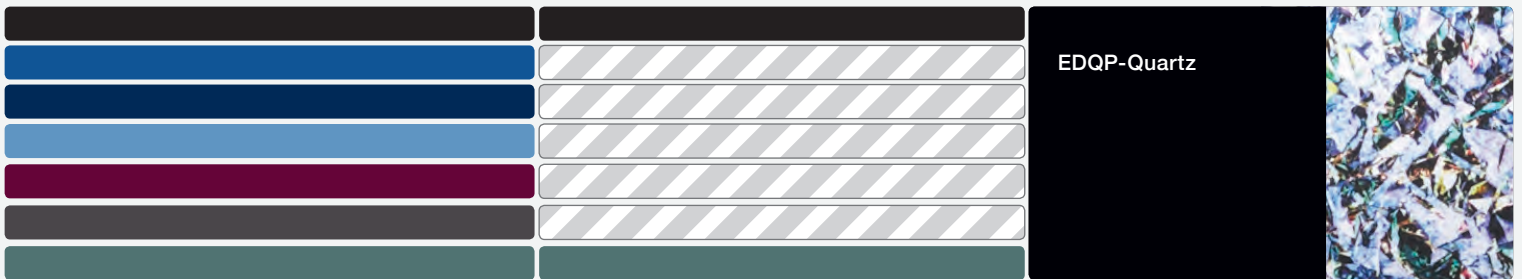
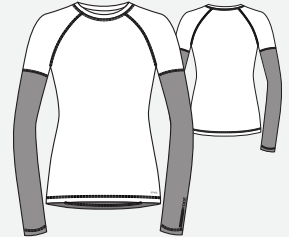


GET007 Impulse Tee

Print raglan with long black sleeves
Sizes: (XS/S), (M), (L/XL), CB: 25.5"
Color shown: EDQP Quartz Print

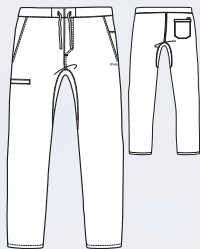
Fabric Content:

95% Polyester / 5% Spandex Jersey



GEP002 Evolution Pant

5-pocket, comfort waist with gusset, slant front pockets, single back pocket and welt cargo pocket
Sizes: XS - 3XL, I: 32"
XST - XLT, I: 34"
Color shown: 08 New Royal



Fabric Content:
76% Nylon / 24% Spandex

- Durable Knit
- Breathable
- Soil Release
- Wrinkle Recovery

AVAILABLE COLORS

01 Black

08 New Royal

23 Indigo

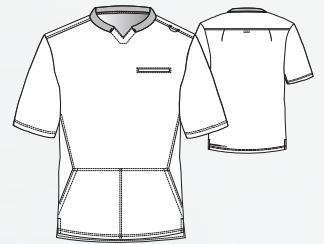


GET009 Evolution Top

3-pocket, knit polo collar with Kanga pocket and chest welt pocket

Sizes: XS - 3XL, CB: 30.5"

Color shown: 08 New Royal



Fabric Content:
76% Nylon / 24% Spandex

Knit Collar:
96% Polyester
4% Spandex

- Durable Knit
- Breathable
- Soil Release
- Wrinkle Recovery

AVAILABLE COLORS

01 Black

08 New Royal

23 Indigo

GREY'S ANATOMY™

© ABC Studios

PROFESSIONAL WEAR
BY BARCO

iMPACT

INCLUSIVE

Patrisha Hastings

Profession: Registered Nurse

Instagram Handle: @trisha_a

As a nurse, it is important to recognize you cannot provide the best care for your patients on your own. For this reason it's important to be inclusive with your fellow healthcare team. I always make sure to reach out to members of my team like respiratory therapist, nutritionist, case management etc. to help provide my patients with the quality of care they deserve. You can't be an expert at everything!

GREY'S ANATOMY™

© ABC Studios

PROFESSIONAL WEAR
BY BARCO

iMPACT

MAKE A LASTING IMPACT...

This modern iconic collection delivers a flawless fit, folded into an ultimate-stretch fabric.

Best for:



2-Way
Spandex-Stretch



| Soil Release



| Extreme Comfort



| Moisture-Wicking

Primary Fabric Content:
74% Polyester/23% Rayon/3% Spandex

Color shown: 1863 Rosewood

GIT007 Elite Top

4-pocket, V-neck, plush black elastic trim with heather tipping, Barco Tape side detailing
 Sizes: XXS - 3XL, CB: 26"
 Color shown: 1863 Rosewood
 Tape color: 905 Steel



Fabric Content:
 74% Polyester / 23% Rayon
 3% Spandex

NEW COLOR

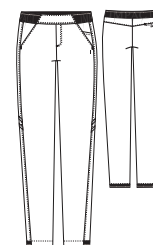
1863 Rosewood • NEW

See page 24-25 for all details



GIP504 Elite Pant

4-pocket mid-rise, logo plush elastic waistband with heather tipping, plush elastic at hem and Barco Tape detailing
 Modern Fit
 Sizes: XXS - 3XL, I: 30.5"
 XXSP - XLP, I: 28.5"
 XXST - XLT, I: 33.5"
 Color shown: 1863 Rosewood
 Tape color: 905 Steel



7187 Harmony Top

3-pocket, V-neck with Barco Tape detail, aerodynamic shaped hem, titanium colored utility ring and t-back seaming
Modern Fit

Sizes: XXS - 3XL, CB: 26"

Color shown: 1863 Rosewood
Tape color: 905 Steel



Fabric Content:
74% Polyester / 23% Rayon
3% Spandex

NEW COLOR

1863 Rosewood • NEW

See page 24-25 for all details

7228 Elevate Pant

6-pocket, mid-rise straight leg with matching Barco Tape detail, cargo with hidden welt pocket, knit comfort elastic waistband, grommet eyes with titanium colored tipped ties and back vents at hem

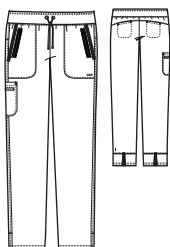
Modern Fit

Sizes: XXS - 3XL, I: 31.5"

XXSP - XLP, I: 29.5"

XXST - XLT, I: 33.5"

Color shown: 1863 Rosewood



Fabric Content:
 74% Polyester / 23% Rayon
 3% Spandex

GIP504 Elite Pant

4-pocket, mid-rise, logo plush elastic waistband with heather tipping, plush elastic at hem and Barco Tape* detailing
 Modern Fit
 Sizes: XXS - 3XL, I: 30.5"
 XXSP - XLP, I: 28.5"
 XXST - XLT, I: 33.5"
 Color shown: 1609 Iris Glaze
 *Barco Tape is 905 Steel



7228 Elevate Pant

6-pocket, mid-rise straight leg with matching Barco Tape* detail, cargo with hidden welt pocket, knit comfort elastic waistband, grommet eyes with titanium colored tipped ties and back vents at hem
 Modern Fit
 Sizes: XXS - 3XL, I: 31.5"
 XXSP - XLP, I: 29.5"
 XXST - XLT, I: 33.5"
 Color shown: 1863 Rosewood
 *Barco Tape is 905 Steel



01 Black		
08 New Royal		
23 Indigo		
40 Ciel		
65 Wine		
328 Bahama		
471 Moonstruck		
905 Steel		
1024 Surf Aqua		
1609 Iris Glaze		
1863 Rosewood • NEW		



7227 Harmony Pant

4-pocket, low-rise shaped leg with double welt cargo pockets, knit waistband with contrast space dye knit inset, hidden tie and scalloped hem
Modern Fit
Sizes: XXS - 3XL, I: 31.5"
XXSP - XLP, I: 29.5"
XXST - XLT, I: 33.5"
Color shown: 23 Indigo



GIT007 Elite Top

4-pocket, V-neck, plush black elastic trim with heather tipping, Barco Tape* side detailing
Sizes: XXS - 3XL, CB: 26"
Color shown: 40 Ciel
*Barco Tape DTM on 40 Ciel



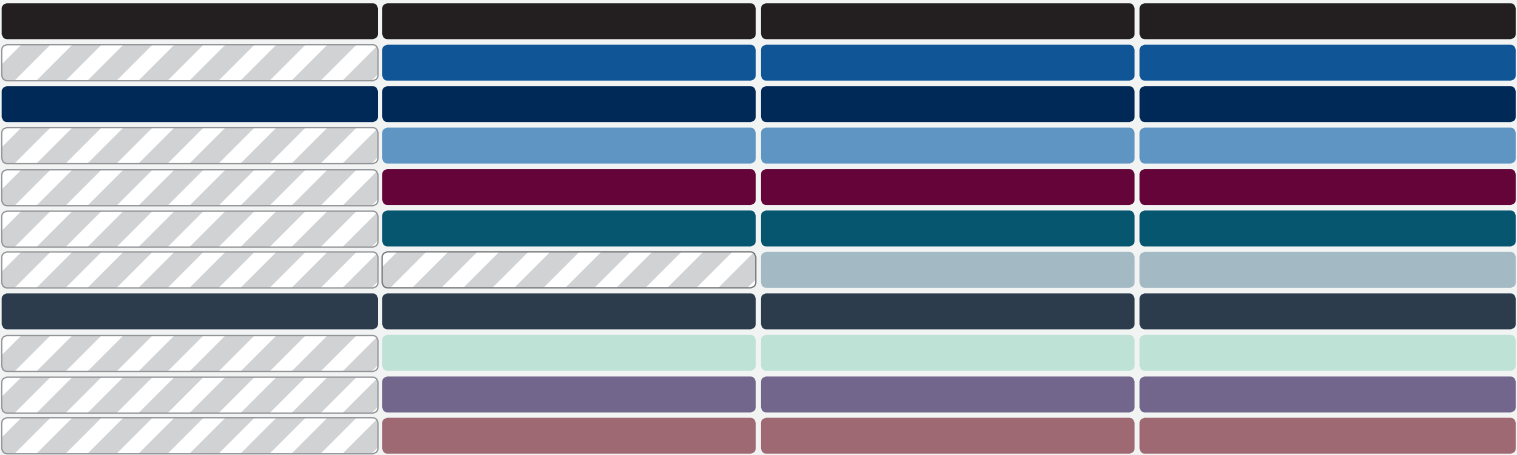
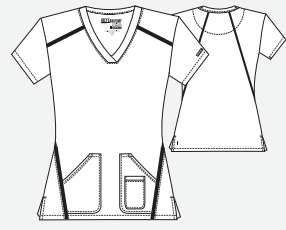
7187 Harmony Top

3-pocket, V-neck with Barco Tape* detail, aerodynamic shaped hem, titanium colored utility ring and t-back seaming
Modern Fit
Sizes: XXS - 3XL, CB: 26"
Color shown: 1024 Surf Aqua
*Barco Tape is 905 Steel



7188 Elevate Top

3-pocket, crossover V-neck with Barco Tape* detail at front and back seaming, including 2 patch pockets with utility pocket
Modern Fit
Sizes: XXS - 3XL, CB: 25.5"
Color shown: 1863 Rosewood
*Barco Tape is 905 Steel



7445 Jacket

2-pocket, asymmetric side zip,
 kimono wrap collar and
 performance detail seams
 Sizes: XXS - 3XL, CB: 25.5"
 Color shown: 10 White

Fabric content:
 50% Polyester / 50%
 Sorona™ Polyester Knit

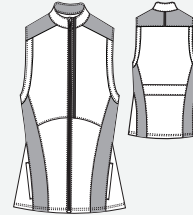


GIV001 Vest Top

2-pocket, contrast panel,
 zipper front with Barco Tape
 Sizes: XXS - 3XL, CB: 24.5"
 Color shown: 01 Black/Grey Space
 Dye

Fabric Content:
 50% Polyester/50% Sorona™ Polyester knit

Space Dye panels fabric content:
 49% Polyester/45% Nylon
 6% Spandex Knit



01 Black	
10 White	
23 Indigo	
471 Moonstruck	
905 Steel	

01 Black



Core
 Colors

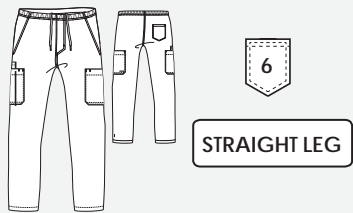


Fabric Content:
 74% Polyester / 23% Rayon
 3% Spandex

0219 Ascend Pant

6-pocket, double cargo with slash pockets, full elastic waistband with draw-cord and functional fly, reinforced back pocket and hidden cargo pocket with Barco Tape, louvered side vent
 Sizes: XXS - 3XL, I: 32"
 XXSS - XLS, I: 30"
 XXST - XLT, I: 34"
 Color shown: 08 New Royal

DTM Barco Tape detailing on 08 New Royal



0118 Ascend Top

3-pocket, crossover V-neck with 2 front side seam pockets and single chest pocket, Barco Tape detailing on back yoke, overlap side seam vents
 Sizes: XXS - 3XL, CB: 29"
 Color shown: 23 Indigo

DTM Barco Tape detailing on 08 New Royal



01 Black		
08 New Royal		
23 Indigo		
65 Wine		
905 Steel		



GREY'S ANATOMYTM

© ABC Studios

PROFESSIONAL WEAR
BY BARCO

Signature



GREY'S ANATOMY™

© ABC Studios

PROFESSIONAL WEAR
BY BARCO

Signature

You deserve to feel like this...

Draped in 360 degree sophisticated luxury that pampers you with premium 4-way stretch fabric.

GREY'S ANATOMY™
BY BARCO

Best for:



360° Spandex-Stretch



Wrinkle-Resistant



Super-Soft Touch



Luxurious Appeal

Primary Fabric Content:
71% Polyester/24% Rayon/5% Spandex

Color shown: 1561 Wine Shade

NEW STYLE

GNP508 Astra Pant

4-pocket, flat front with inside draw-cord, elastic back, side entry and welt cargo pockets, with back spade pocket and straight leg

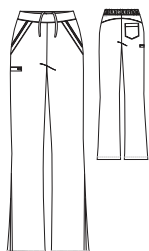
Modern Fit

Sizes: XXS - 3XL, I: 31.5"

XSP - XLP, I: 29.5"

XST - XLT, I: 33.5"

Color shown: 1562 Denim Shade



Fabric Content:

71% Polyester / 24% Rayon

5% Spandex

NEW SHADE COLORS

1560 Shadow Shade • NEW

1561 Wine Shade • NEW

1562 Denim Shade • NEW

NEW SOLID COLORS

01 Black • NEW

08 New Royal • NEW

23 Indigo • NEW

142 Graphite • NEW

See page 36 for all details



Signature

GNT019 Astra Top

3-extra deep pocket, V-neck
with laced sleeve detail,
hi-low hem rounded back

Sizes: XXS - 3XL, CB: 26"

Color shown: 1562 Denim Shade



Fabric Content:
71% Polyester / 24% Rayon
5% Spandex

NEW SHADE COLORS

1560 Shadow Shade • NEW

1561 Wine Shade • NEW

1562 Denim Shade • NEW

See page 37 for all details



GREY'S ANATOMY™

© ABC Studios

PROFESSIONAL WEAR
BY BARCO

Signature

2207 Callie Pant

3-pocket, cargo, low-rise
shaped leg, tie front
and elastic back

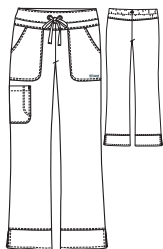
Modern Fit

Sizes: XXS - 5XL, I: 31.5"

XXSP - 2XLP, I: 29.5"

XXST - XLT, I: 33.5"

Color shown: 1560 Shadow Shade



Fabric Content:

71% Polyester / 24% Rayon

5% Spandex

NEW SHADE COLORS

1560 Shadow Shade • NEW

1561 Wine Shade • NEW

1562 Denim Shade • NEW

See page 36 for all details



Signature

2121 Top

2-pocket, notch neck with tab detail
and pen slot, split needle, front and
back yoke

Modern Fit

Sizes: XXS - 5XL, CB: 26"

Color shown: 1560 Shadow Shade



Fabric Content:

71% Polyester / 24% Rayon

5% Spandex

NEW SHADE COLORS

1560 Shadow Shade • NEW

1561 Wine Shade • NEW

1562 Denim Shade • NEW

See page 36 for all details



GREY'S ANATOMY™

© ABC Studios

PROFESSIONAL WEAR
BY BARCO

Signature

NEW STYLE

Fabric Content:
96% Polyester / 4% Spandex



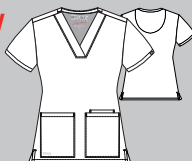
GNT030 - OJBL Orchid Jubilee NEW

3-pocket, shaped V-neck, fitted back

Modern Fit

Size: XS - 5XL, CB: 25.5"

GNP502 Nina Pant - 10 White



Coordinating colors:

01 10 23 250



GNT030 - ABIR Abstract Iris NEW

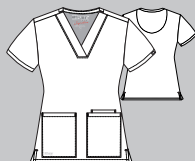
3-pocket, shaped V-neck, fitted back
Modern Fit

Size: XS - 5XL, CB: 25.5"

2218 Olivia Pant - 142 Graphite

Coordinating colors:

08 10 142 328 471



GNT030 - MNST Moonlit Stripe NEW

3-pocket, shaped V-neck, fitted back
Modern Fit

Size: XS - 5XL, CB: 25.5"

2207 Callie Pant - 65 Wine

Coordinating colors:

01 08 10 65 1561



Fabric Content:
71% Polyester / 24% Rayon
5% Spandex

GNP508 Astra Pant **NEW**

4-pocket, flat front with inside draw-cord, elastic back, side entry and welt cargo pockets, with back spade pocket and straight leg
Modern Fit
Sizes: XXS - 3XL, I: 31.5"
XSP - XLP, I: 29.5"
XST - XLT, I: 33.5"
Color shown: 08 New Royal



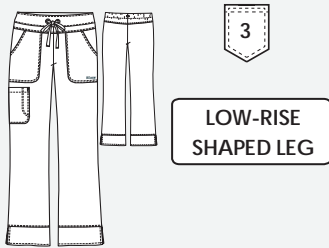
GNP502 Nina Pant

3-pocket, flat front with inside draw-cord mid-rise back welt pocket
Modern Fit
Sizes: XXS - 5XL, I: 31"
XXSP - XLP, I: 29"
XXST - XLT, I: 33.5"
Color shown: 1104 Tuscany



2207 Callie Pant

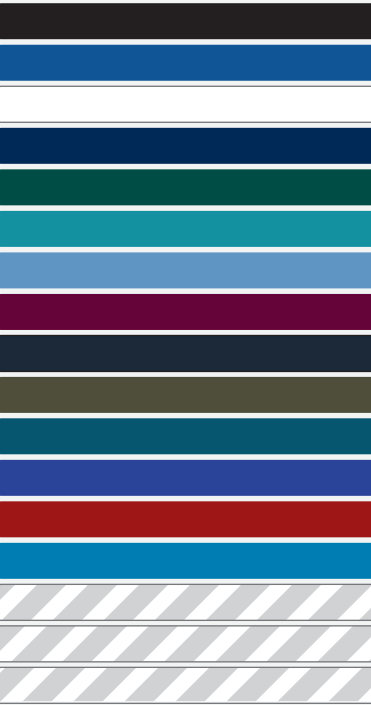
3-pocket, cargo, low-rise shaped leg, tie front and elastic back
Modern Fit
Sizes: XXS - 5XL, I: 31.5"
XXSP - 2XLP, I: 29.5"
XXST - XLT, I: 33.5"
Color shown: 65 Wine



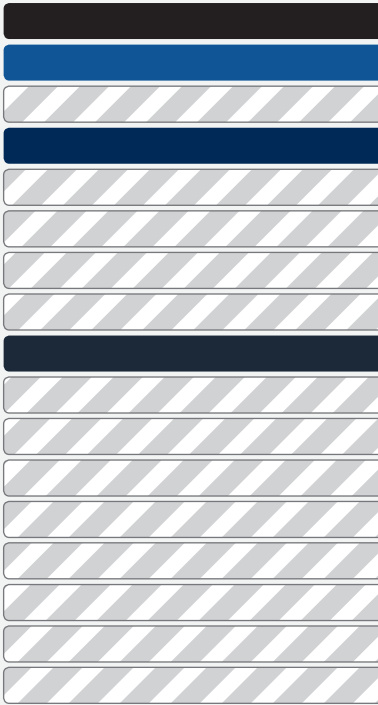
01 Black	• NEW		
08 New Royal	• NEW		
10 White			
23 Indigo	• NEW		
37 Hunter			
39 Teal			
40 Ciel			
65 Wine			
142 Graphite	• NEW		
312 Olive			
328 Bahama			
503 Galaxy			
1104 Tuscany			
1551 Mediterranean Blue			
1560 Shadow Shade • NEW			
1561 Wine Shade • NEW			
1562 Denim Shade • NEW			



6-pocket, double cargo with mid-rise
straight leg with elastic waist, front
tie, 2 angled front welt pockets and 1
back welt pocket
Modern Fit
Sizes: XXS - 5XL, I: 31.5"
XXSP - XLP, I: 29.5"
XXST - XLT, I: 33.5"
Color shown: 39 Teal



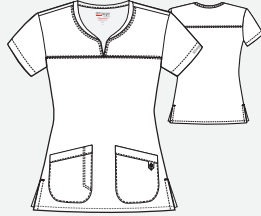
3-pocket, split neck tunic with chest welt pocket, reinforced lower pockets and side vents
 Sizes: XXS - 3XL, CB: 25.5"
 Color shown: 23 Indigo



Fabric Content:
 71% Polyester / 24% Rayon
 5% Spandex

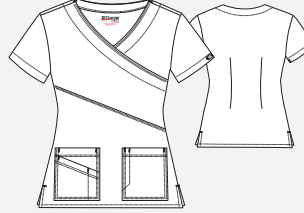
2121 Top

2-pocket, notch neck with tab detail and pen slot, split needle, front and back yoke
 Modern Fit
 Sizes: XXS - 5XL, CB: 26"
 Color shown: 1104 Tuscany



2130 Top

3-pocket, V-neck surplice mock wrap with PDA pocket, pen slot and fitted back
 Modern Fit
 Sizes: XXS - 5XL, CB: 25.5"
 Color shown: 08 New Royal



2407 Warm-Up

2-pocket, jewel neck snap front with princess seams, banded sides, back detail, and knit sock cuffs
 Modern Fit
 Sizes: XXS - 5XL, CB: 27"
 Color shown: 328 Bahama

Knit sock cuff:
 100% Polyester



01 Black			
08 New Royal			
10 White			
23 Indigo			
37 Hunter			
39 Teal			
40 Ciel			
65 Wine			
142 Graphite			
312 Olive			
328 Bahama			
503 Galaxy			
1104 Tuscany			
1551 Mediterranean Blue			
1560 Shadow Shade • NEW			
1561 Wine Shade • NEW			
1562 Denim Shade • NEW			





2140 Top

3-pocket, V-neck surplice color block mock wrap with PDA pocket, pen slot and fitted back
 Modern Fit
 Sizes: XXS - 5XL, CB: 25.5"
 Size shown: 2X top, 3X pant
 Color shown: GBL Galaxy/Black



Fabric Content:
 71% Polyester / 24% Rayon
 5% Spandex

GBL Galaxy/Black

GREY'S ANATOMY™

© ABC Studios

PROFESSIONAL WEAR
BY BARCO

+ SPANDEX STRETCH

CREATIVITY

Arielle Auston

Occupation: Cosmetic and Cardiac Nurse

Instagram Handle: @arieauston_rn

Nurses never get to walk into work knowing what our day is going to throw at us! Some shifts start off crazy, and end calm, while many start off wild and still end wild! It's like playing Russian Roulette most days. To keep up with the wild and crazy, we have no choice but to get creative! No two situations are ever the same, and as a result, we have to adjust and be flexible to keep our patients safe and provide them with the best possible care...and of course add a little fun in there too! Creativity is one of the most useful assets all nurses possess!

GREY'S ANATOMY™

© ABC Studios

PROFESSIONAL WEAR
BY BARCO

+ SPANDEX STRETCH

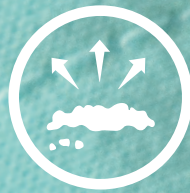
EXPERIENCE UNRIVALED FLEXIBILITY...

Your favorite scrub brand now offers unrivaled comfort and flexibility with Spandex-Stretch.

Best for:



2-Way
Spandex-Stretch



| Soil Release



| Extreme Comfort



| Moisture-Wicking

GREY'S ANATOMY™
STRETCH

Primary Fabric Content:
74% Polyester/23% Rayon/3% Spandex Twill

Color shown: 1024 Surf Aqua

GRST001 Kim Top

3-pocket V-neck surplice with front and back princess seams, zip front pocket

Modern Fit

Sizes: XXS - 5XL, CB: 26"

Color shown: 1755 Sunkissed Coral



Fashion Colors: Zipper is black on all (1056, 1074, 1022, 1098, 1503, 1507, 1755, 1024)

Core Colors: Zipper is DTM (Dyed to Match) (01, 08, 23, 40, 65, 328, 600, 905)

Fabric Content:

74% Polyester/23% Rayon

3% Spandex Twill

NEW COLORS

1755 Sunkissed Coral • NEW

1024 Surf Aqua • NEW

See page 48-49 for all details



GRSP500 Kim Pant

3-pocket logo plush elastic back

waist-band, zip cargo pocket

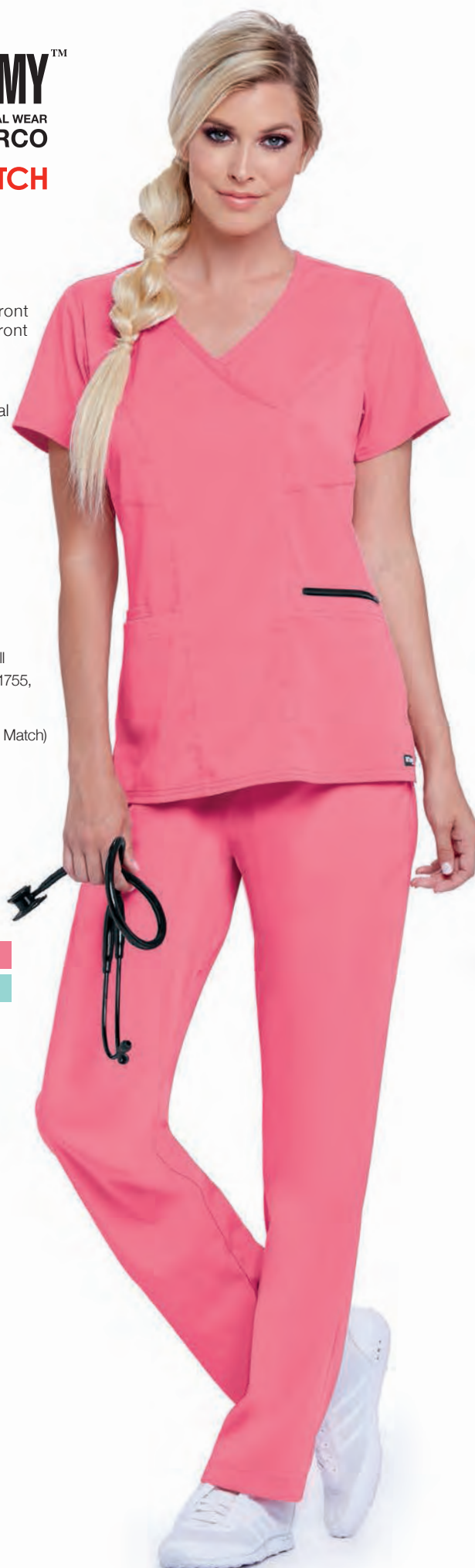
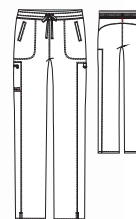
Modern Fit

Sizes: XXS - 5XL, I: 31"

XXSP - 2XLP, I: 29"

XXST - XLT, I: 33.5"

Color shown: 1755 Sunkissed Coral



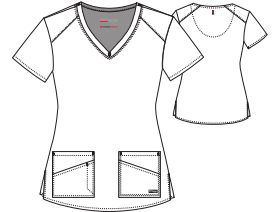
GRST011 Emma Top

4-pocket, V-neck with angled seams

Modern Fit

Sizes: XXS - 5XL, CB: 26"

Color shown: 1024 Surf Aqua



Fabric Content:

74% Polyester / 23% Rayon

3% Spandex Twill

NEW COLORS

1755 Sunkissed Coral • NEW

1024 Surf Aqua • NEW

See page 48-49 for all details

GRSP510 Emma Pant

5-pocket, flat front elastic back, inside draw-cord, mid-rise

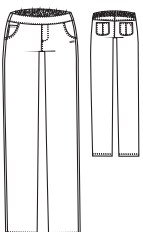
Modern Fit

Sizes: XXS - 5XL, I: 30.5"

XXSP - 2XLP, I: 28.5"

XXST - XLT, I: 33.5"

Color shown: 1024 Surf Aqua



ACTIVE + SPANDEXSTRETCH

GVSP515 Pant

5-pocket, mid-rise, logo plush elastic waist boot leg with angled seams

Modern Fit

Sizes: XXS - 5XL, I: 31.5"

XXSP - XLP, I: 29.5"

XXST - XLT, I: 33.5"

Color shown: 08 New Royal



Fabric Content:

74% Polyester / 23% Rayon

3% Spandex twill

Waistband:

88% Polyester / 12% Spandex

NEW COLORS

65 Wine • NEW

328 Bahama • NEW

1024 Surf Aqua • NEW

1755 Sunkissed Coral • NEW

ADDITIONAL COLORS

01 Black

08 New Royal

10 White

23 Indigo

40 Ciel

905 Steel

See page 50 for all details



ACTIVE

+ SPANDEX STRETCH

NEW STYLE

GVST028 Bree Tuck-In Top

1-pocket, knit V-neck with light grey badge loop and shaped high low hem
Modern Fit

Sizes: XS - 3XL, CB: 25.5"

Color shown: 08 New Royal



Fabric Content:

74% Polyester / 23% Rayon

3% Spandex twill

NEW COLORS

01 Black • NEW

08 New Royal • NEW

23 Indigo • NEW

905 Steel • NEW

See page 51 for un-tucked image



ACTIVE + SPANDEX STRETCH

GVSP512 Jogger Pant

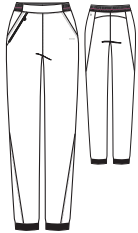
3-Pocket, logo plush elastic waist
mid-rise jogger cuff pant
Modern Fit

Sizes: XXS - 5XL, I: 31.5"

XXSP - XLP, I: 29.5"

XST - XLT, I: 33.5"

Color shown: CBWS Ciel



Fabric Content:

74% Polyester / 23% Rayon

3% Spandex twill

Pant Cuff:

88% Polyester

12% Spandex

NEW COLORS

NBWS New Royal • NEW

CBWS Ciel • NEW

ADDITIONAL COLORS

BWWS Black

IWWS Indigo

SWWS Steel

See page 50 for all details



ACTIVE + SPANDEX STRETCH

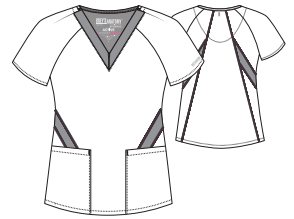
GVST026 Top

2-pocket, V-neck, zip front with knit panel side insets

Modern Fit

Sizes: XXS - 5XL, CB: 26"

Color shown: 40 Ciel



Fabric Content:

74% Polyester / 23% Rayon

3% Spandex twill

Neck and Waist Insets:

88% polyester / 12% Spandex

NEW COLORS

08 New Royal • NEW

40 Ciel • NEW

ADDITIONAL COLORS

01 Black

23 Indigo

905 Steel

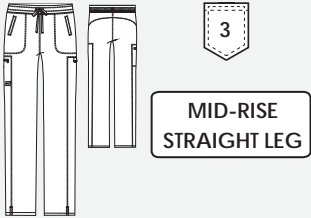
See page 51 for all details



Fabric Content:
 74% Polyester / 23% Rayon
 3% Spandex Twill

GRSP500 Kim Pant

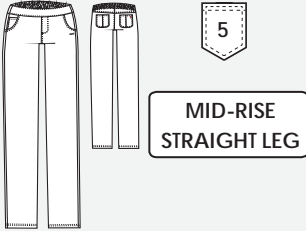
3-pocket, logo plush elastic back waistband, zip cargo pocket
 Modern Fit
 Sizes: XXS - 5XL, I: 31"
 XXSP - 2XLP, I: 29"
 XXST - XLT, I: 33.5"
 Color shown: 1507 Vivid Violet



+ SPANDEXSTRETCH

GRSP510 Emma Pant

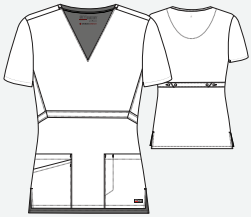
5-pocket, flat front elastic back, inside draw-cord, mid-rise
 Modern Fit
 Sizes: XXS - 5XL, I: 30.5"
 XXSP - 2XLP, I: 28.5"
 XXST - XLT, I: 33.5"
 Color shown: 600 Scarlet



+ SPANDEXSTRETCH

GRST027 Top

3-pocket, logo V-neck empire front with button tab back
 Modern Fit
 Sizes: XXS - 5XL, CB: 26"
 Color shown: 1024Surf Aqua



+ SPANDEXSTRETCH

01 Black			
08 New Royal			
10 White			
23 Indigo			
40 Ciel			
65 Wine			
328 Bahama			
600 Scarlet			
905 Steel			
1024 Surf Aqua • NEW			
1503 Peacock Blue			
1507 Vivid Violet			
1755 Sunkissed Coral • NEW			

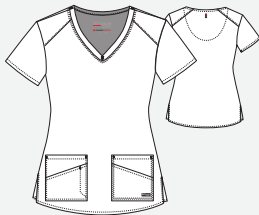
Core
 Colors



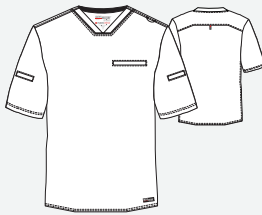
3-pocket, V-neck surplice with front
and back princess seams, zip front
pocket
Modern Fit
Sizes: XXS - 5XL, CB: 26"
Color shown: 40 Ciel



4-pocket, V-neck with angled seams
Modern Fit
Sizes: XXS - 5XL, CB: 26"
Color shown: 1503 Peacock Blue

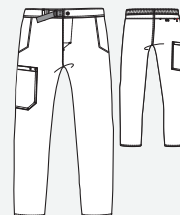


3-welt pocket, sport V-neck with
angled back yoke
Sizes: XS - 5XL, CB: 29"
Color shown: 08 New Royal



A vertical stack of 15 horizontal bars. The colors and patterns from top to bottom are: solid black, solid blue, solid white, solid dark blue, solid light blue, solid maroon, solid teal, diagonal grey and white stripes, solid dark grey, diagonal grey and white stripes, diagonal grey and white stripes, diagonal grey and white stripes, diagonal grey and white stripes, diagonal grey and white stripes, and diagonal grey and white stripes.

4-pocket, belt closure waist
with zip fly cargo
Sizes,: XS - 5XL, I: 32"
XSS - 2XLS, I: 30"
XST - XLT, I: 34"
Color shown: 65 Wine



ACTIVE
+ SPANDEXSTRETCH

Fabric Content:

74% Polyester / 23% Rayon
3% Spandex Twill

Waistband Fabric Content:

88% Polyester / 12% Spandex

GVSP515 Pant

5-pocket, mid-rise, logo plush elastic waist boot leg with angled seams

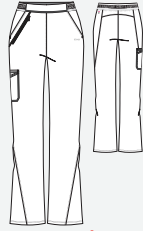
Modern Fit

Sizes: XXS - 5XL, I: 31.5"

XXSP - XLP, I: 29.5"

XXST - XLT, I: 33.5"

Color shown: 1024 Surf Aqua



MID-RISE
BOOT LEG

+ SPANDEXSTRETCH

01 Black
10 White
08 New Royal
23 Indigo
40 Ciel
65 Wine • NEW
328 Bahama • NEW
905 Steel
1024 Surf Aqua • NEW
1755 Sunkissed Coral • NEW

GVSP509 Pant

3-pocket, mid-rise cargo with knit elastic waist and heather drawcord

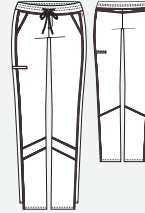
Modern Fit

Sizes: XXS - 5XL, I: 30"

XXSP - XLP, I: 28"

XXST - XLT, I: 33.5"

Color shown: 905 Steel



MID-RISE
TAPERED LEG

+ SPANDEXSTRETCH

01 Black
10 White
08 New Royal
23 Indigo
40 Ciel
65 Wine • NEW
905 Steel • NEW
1503 Peacock Blue
1507 Vivid Violet

GVSP512 Jogger Pant

3-Pocket, logo knit waist mid-rise jogger cuff

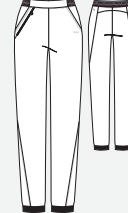
Modern Fit

Sizes: XXS - 5XL, I: 31.5"

XXSP - XLP, I: 29.5"

XST - XLT, I: 33.5"

Color shown: CBWS Ciel



MID-RISE
JOGGER LEG

+ SPANDEXSTRETCH

BWWS Black
NBSW New Royal • NEW
IWWS Indigo
CBWS Ciel • NEW
SWWS Steel

Pant Cuff:

88% Polyester
12% Spandex

Core
Colors



GVST028 Bree Tuck-In
Top **NEW**

1-pocket, knit V-neck with light grey badge loop and shaped high low hem
Modern Fit
Sizes: XS - 3XL, CB: 25.5"
Color shown: 23 Indigo



+ SPANDEXSTRETCH

- | | |
|--------------|-------|
| 01 Black | • NEW |
| 08 New Royal | • NEW |
| 23 Indigo | • NEW |
| 905 Steel | • NEW |

GVST026 Top

2-pocket, V-neck with invisible zipper and knit panel side inserts
Modern Fit
Sizes: XXS - 5XL, CB: 26"
Color shown: 08 New Royal
Inset knit logo:
88% Polyester/12% Spandex



+ SPANDEXSTRETCH

- | | |
|--------------|-------|
| 01 Black | |
| 08 New Royal | • NEW |
| 23 Indigo | |
| 40 Ciel | • NEW |
| 905 Steel | |

GVST017 Text Top

2-pocket, V-neck with invisible zipper and logo knit contrast side insets
Modern Fit
Sizes: XXS - 3XL, CB: 26"
Color shown: VVST Vivid Violet/Steel
Inset knit logo:
88% Polyester/12% Spandex



+ SPANDEXSTRETCH

- | |
|--------------------------|
| PBST Peacock/Steel |
| VVST Vivid Violet /Steel |

GVST003 Top

3-pocket, V-neck, raglan sleeves, color block details invisible zip pocket and princess seams
Modern Fit
Sizes: XXS - 5XL, CB: 26.5"
Color shown: SCBK Sunkissed/Black



+ SPANDEXSTRETCH

- | |
|----------------------------|
| SASL Surf Aqua/Steel • NEW |
| SCBK Sunkissed/Black •NEW |
| STPB Steel/Peacock |
| VVBL Vivid Violet/Black |





THANKFUL

Jessica Sonnentag
Occupation: Dental Student

Instagram Handle: @jessonntag

I am thankful to have a career in dentistry because the prevalence of oral health is both immediate and life-long. Dentists aid in short term fixes such as helping patients be more comfortable with their smiles through fixing a broken tooth or relieving the pain of a toothache. On the other hand, poor dental health is linked to increased risk of several systemic diseases. The combination of instant gratification from patients as well as knowing I am aiding in patients life-long health, makes me thankful for such a great profession.

GREY'S ANATOMY™

© ABC Studios

PROFESSIONAL WEAR
BY BARCO

FEEL EMBRACED BY TIMELESS STYLE...

Designed with timeless fashion inspiration for authentic people who appreciate brands that are known for quality.

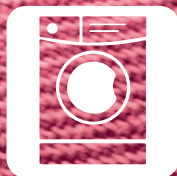
Best for:



Moisture-Wicking



All-Day Freshness



Easy Care



Super-Soft Touch

Primary Fabric Content:
77% Polyester/23% Rayon

Color shown: 1755 Sunkissed Coral

ACTIVE

41435 Top

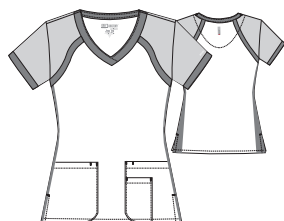
3-pocket color block crossover

V-neck

Modern Fit

Sizes: XXS - 3XL, CB: 25.5"

Color shown: SASB Surf Aqua/Steel/Black



Fabric Content:

77% Polyester / 23% Rayon

NEW COLORS

SASB - Surf Aqua/Steel/Black • NEW

SKBG - Coral/Black/ Granite • NEW

ADDITIONAL COLORS

PBSB - Peacock Blue/Steel/Black

VVBG - Vivid Violet/Black/ Granite



4275 Pant

3-pocket logo plush elastic waist-band pant with draw-cord

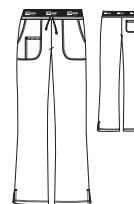
Modern Fit

Sizes: XXS - 5XL, I: 31"

XXSP - XLP, I: 29"

XXST - XLT, I: 33"

Color shown: 905 Steel



See page 59 for all details

41452 Top

3-pocket, 'marquis' style
V-neck top with princess
seams front and back,
racer side seam details
Modern Fit

Sizes: XXS -5XL, CB: 25.5"

Color shown: 1755 Sunkissed Coral



Fabric Content:

77% Polyester / 23% Rayon

NEW COLORS

1755 Sunkissed Coral • NEW

See page 59, 60 for all details

4277 Pant

6-pocket, flat front, knit elastic back
waistband with draw-cord, double
cargo, back pockets mid-rise
Modern Fit

Sizes: XXS - 5XL, I: 31.5"

XXSP - 2XLP, I: 29.5"

XXST - XLT, I: 33.5"

Color shown: 1755 Sunkissed Coral

Knit Waist and Riser:

88% Polyester / 12% Spandex



NEW COLORS

1755 Sunkissed Coral • NEW

NEW PRINTS

Fabric Content:
55 Cotton / 45% Rayon



41386-BSNT Bossa Nova Stripe **NEW**

2-pocket, V-neck top with shirring
at back yoke

Size: XS - 5XL, CB: 26"

GRSP500 Kim Pant - 1755 Sunkissed Coral



Coordinating colors:

01 65 905 1024 1755



41386 - SNWV Sound Waves NEW
 2-pocket, V-neck top with shirring
 at back yoke
 Size: XS - 5XL, CB: 26"
 GRSP510 Emma Pant - 10 White



Coordinating colors:

01 10



41386 - PFLS Paper Flowers NEW
 2-pocket, V-neck top with shirring
 at back yoke
 Size: XS - 5XL, CB: 26"
 GVST515 Pant - 1024 Surf Aqua



Coordinating colors:

01 37 600 1024 1755

Fabric Content:
77% Polyester / 23% Rayon

4232 Pant

5-pocket, tie front pant with elastic back
Classic Fit
Sizes: XXS - 5XL, I: 31.5",
XXSP - 2XLP, I: 29.5"
XXST - XLT, I: 33.5"
Color shown: 328 Bahama



4245 Pant

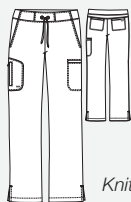
4-pocket, tie front cargo pant
with inside logo plush elastic waistband
Classic Fit
Sizes: XXS - 5XL, I: 31.5"
XXSP - XLP, I: 29.5"
XXST - XLT, I: 33.5"
Color shown: 65 Wine



01 Black		
08 New Royal		
10 White		
23 Indigo		
37 Hunter		
39 Teal		
40 Ciel		
65 Wine		
328 Bahama		
471 Moonstruck		
503 Galaxy		
549 Purple Rain		
600 Scarlet		
905 Steel		
910 Granite		
1024 Surf Aqua •NEW		
1503 Peacock Blue		
1507 Vivid Violet		
1755 Sunkissed Coral •NEW		



6-pocket, flat front, knit elastic back
waistband with draw-cord, double cargo,
back pockets mid-rise
Modern Fit
Sizes: XXS - 5XL, I: 31.5"
XXSP - 2XLP, I: 29.5"
XXST - XLT, I: 33.5"
Color shown: 1507 Vivid Violet



MID-RISE
SHAPED LEG

Knit Waist and riser:
88% Polyester/12% Spandex

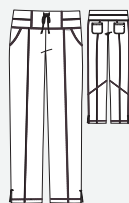
3-pocket, logo plush
elastic waistband
pant with draw-cord
Modern Fit
Sizes: XXS - 5XL, I: 31"
XXSP - XLP, I: 29"
XXST - XLT, I: 33"
Color shown: 905 Steel



LOW-RISE
SHAPED LEG

ACTIVE

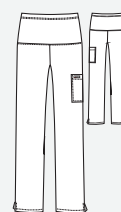
4-pocket, yoga knit waistband with draw-cord
front leg seaming with reverse cover stitching
Modern Fit
Sizes: XXS - 5XL, I: 31.5"
XXSP - 2XLP, I: 29.5
XXST - XLT, I: 33.5
Color shown: 1503 Peacock Blue



LOW-RISE
STRAIGHT LEG

ACTIVE

1-pocket, knit waistband
maternity with cargo pocket
fabric content of panel is:
88% poly 12% spandex.
Sizes: XS - 2XL, I: 31.5"
Color shown: 08 New Royal



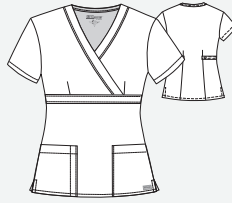
HI-RISE
FLARE LEG

[illegible]

Fabric Content:
 77% Polyester / 23% Rayon

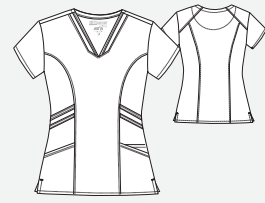
4153 Top

3-pocket, mock wrap
 with tab back
 Modern Fit
 Sizes: XXS - 5XL, CB: 25"
 Color shown: 600 Scarlet



41452 Top

3-pocket, 'marquis' style V-neck top
 with princess seams front and back,
 racer side seam details
 Modern Fit
 Sizes: XXS - 5XL, CB: 25.5"
 Color shown: 1507 Vivid Violet

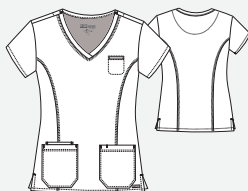


01 Black		
08 New Royal		
10 White		
23 Indigo		
37 Hunter		
39 Teal		
40 Ciel		
65 Wine		
328 Bahama		
471 Moonstruck		
503 Galaxy		
549 Purple Rain		
600 Scarlet		
905 Steel		
910 Granite		
1024 Surf Aqua •NEW		
1503 Peacock Blue		
1507 Vivid Violet		
1755 Sunkissed Coral •NEW		

Core
Colors



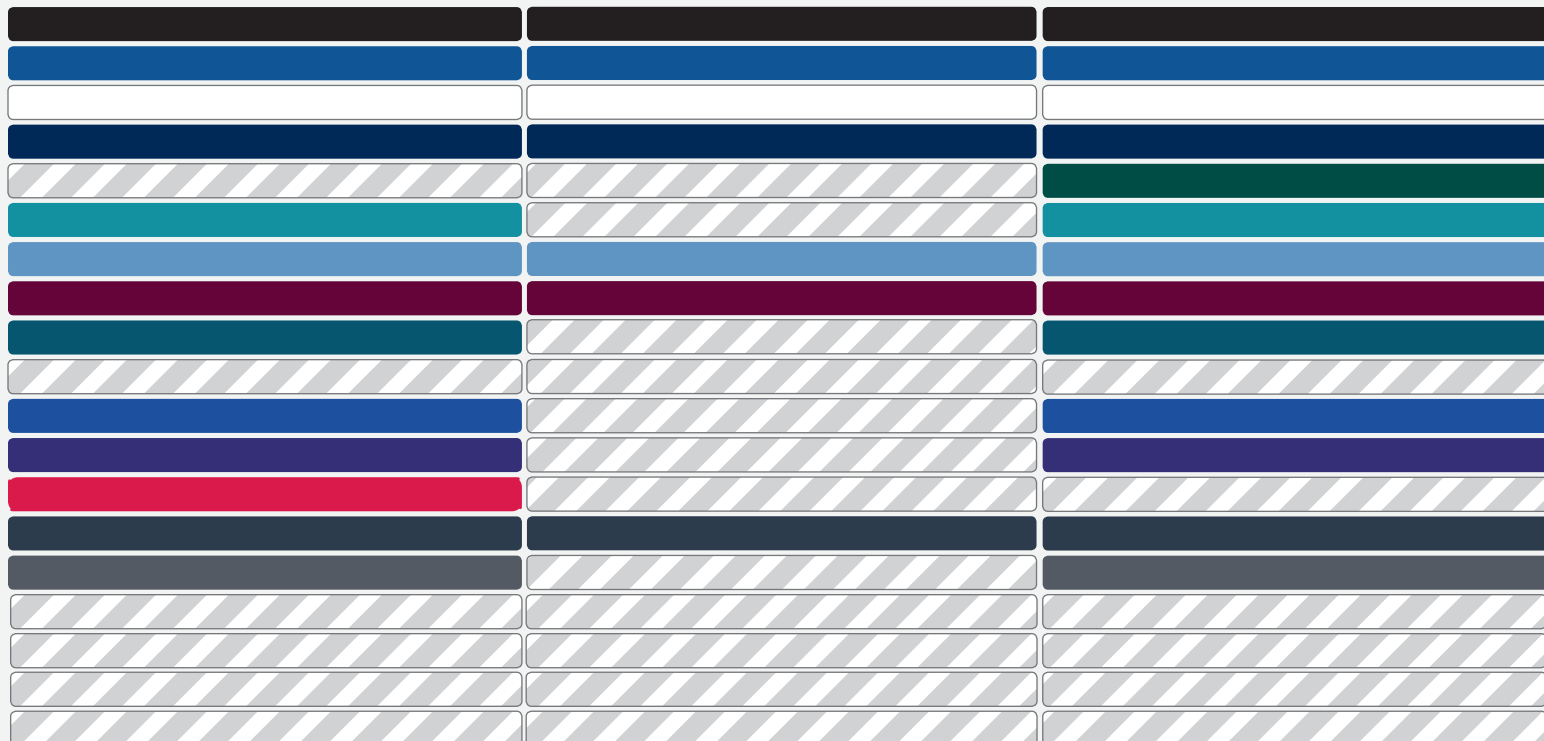
4-pocket, shaped V-neck
with front chest welt pocket,
active seams front and back
Modern Fit
Sizes: XXS - 5XL, CB: 25.5"
Color shown: 40 Ciel



2-pocket, mock wrap with princess seams and elastic back
Classic Fit
Sizes: XS - 5XL, CB: 26"
Color shown: 08 New Royal



2-pocket, V-neck with pen slot
and shirred back yoke
Classic Fit
Sizes: XS - 5XL, CB: 26"
Color shown: 39 Teal



Fabric Content:
 77% Polyester / 23% Rayon

41423 Top

4-pocket, crossover V-neck with side panels, zipper pocket and tulip sleeve detail, fitted back
 Modern Fit
 Sizes: XXS - 5XL, CB: 25.5"
 Color shown: 1503 Peacock Blue

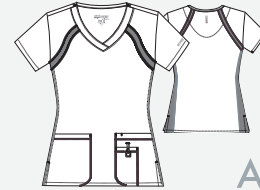


ACTIVE

41447 Top

3-pocket, V-neck, knit insets at raglan sleeve and side panels, reverse cover stitch detail with square utility ring
 Modern Fit
 Size: XXS - 5XL, CB: 25.5"
 Color shown: 10 White

Knit inset:
 88% Polyester/12% Spandex



ACTIVE

01 Black		
08 New Royal		
10 White		
23 Indigo		
37 Hunter		
39 Teal		
40 Ciel		
65 Wine		
328 Bahama		
471 Moonstruck		
503 Galaxy		
549 Purple Rain		
600 Scarlet		
905 Steel		
910 Granite		
1503 Peacock Blue		
1507 Vivid Violet		

Core
 Colors



4-pocket, sporty warm-up with
logo buttons and dyed-to-match
knit cuffs and plain back
Classic Fit
Sizes: XS - 5XL, CB: 26"
Color shown: 23 Indigo

Knit sock cuff:
100% Polyester



4-pocket, round neck warm-up
with logo snaps and dyed-to-
match knit cuffs with fitted back
Classic Fit
Sizes: XS - 5XL, CB:28"
Color shown: 600 Scarlet

Knit sock cuff:
100% Polyester



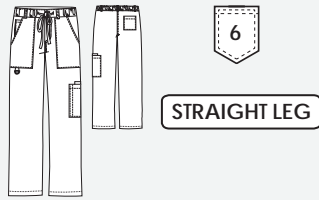
2-pocket, mock wrap empire line
top with tie and fitted back
Sizes: XS - 2XL, CB:27"
Color shown: 08 New Royal

[illegible]

Fabric Content:
 77% Polyester / 23% Rayon

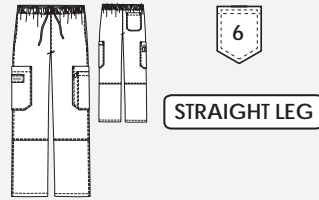
0203 Men's Pant

6-pocket, twill draw-cord waistband flat front pockets, single cargo pocket
 Sizes: S - 5XL, I: 32.5"
 ST - XLT, I: 34.5"
 Color shown: 328 Bahama



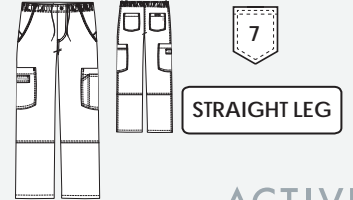
0212 Men's Pant

6-pocket, contrast draw-cord full elastic plush inside logo waistband with contrast bar tacks and cargo pocket
 Sizes: XS - 5XL, I: 32"
 XST - XLT, I: 34"
 Color shown: 503 Galaxy



0215 Men's Pant

7-pocket, full elastic waistband with tack button, zip fly double cargo pockets
 Sizes: XS - 5XL, I: 32"
 ST-XLT, I: 34"
 Color shown: 910 Granite



ACTIVE

01 Black			
08 New Royal			
10 White			
23 Indigo			
37 Hunter			
39 Teal			
40 Ciel			
65 Wine			
328 Bahama			
503 Galaxy			
549 Purple Rain			
905 Steel			
910 Granite			

